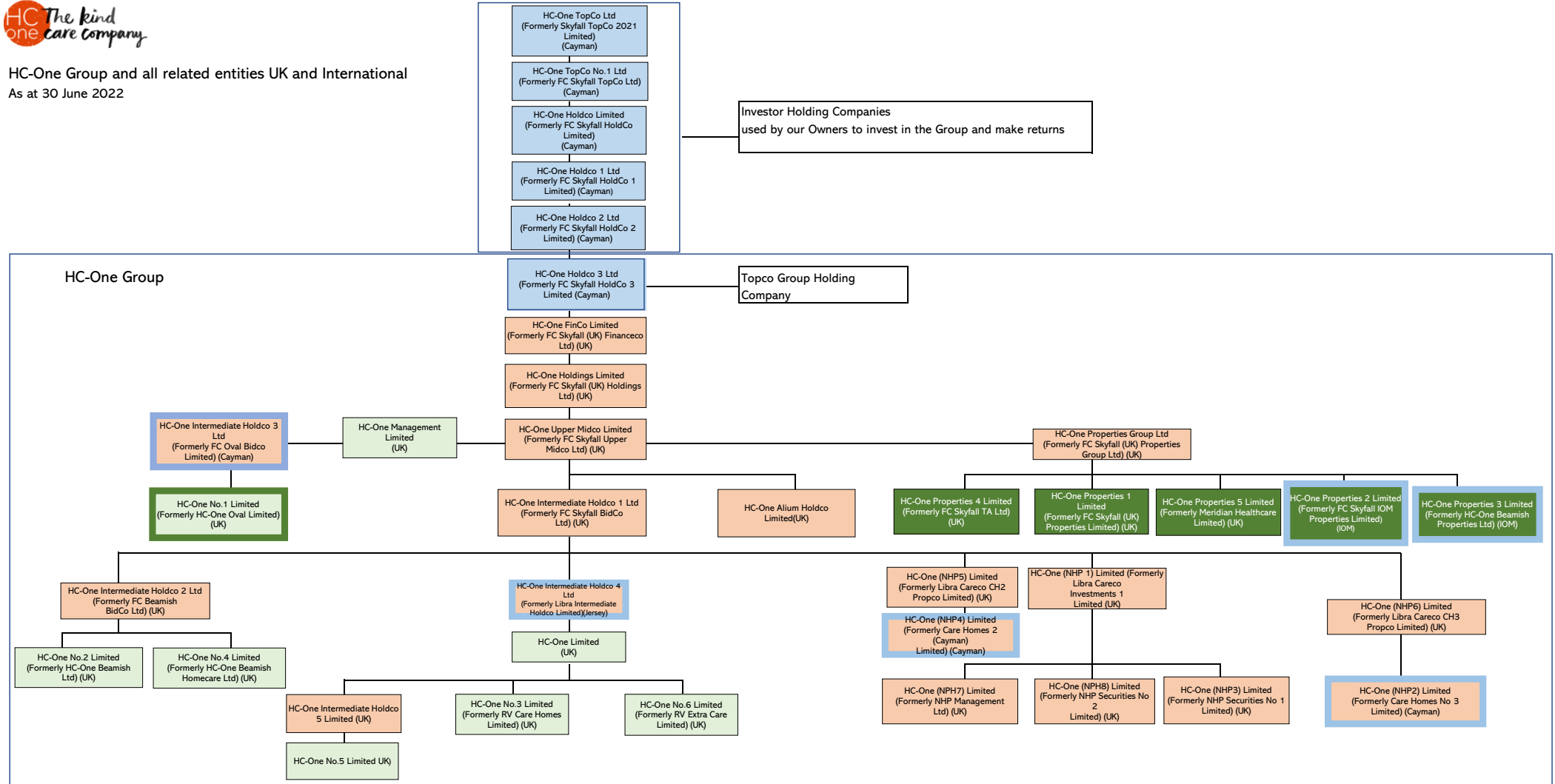




HC-One Group and all related entities UK and International
As at 30 June 2022



Key:

	Overseas Entity - note that all entities are UK Tax Resident regardless of where registered
	Legacy Company - non-trading entity holding historic liabilities and or credits, to be wound down over time
	Operating Company - entities run and operate homes
	Property Company - entities that legally own the physical buildings

Note: all HC-One companies prepare their accounts in UK GAAP, are subject to UK tax and file accounts are UK Companies House